

The Ubuntu Practitioner



The Presenters

George Mansaray

President Sierra Leone Social Work Association
Founder & CEO Ruth's Hope Kindergarten



Ruth Stark

Independent Social Worker, Scotland
Past President IFSW 2014-18
Chief Ya Bomposeh Kunk Bana the third,
of Matheng section, Lokomosama Chiefdom, Port Loko
District, North Western Sierra Leone



2019

THE WESTERN MODELS DON'T WORK HERE

**CO-DESIGN AND CO-PRODUCTION: SOCIAL
WORK IN COMMUNITY DEVELOPMENT WITH
INDIGENOUS VILLAGE COMMUNITIES IN
SIERRA LEONE**



References to consider.....

The Social Worker – Clem Atlee 1920

S12 Social Work (Scotland) Act 1968

Duty of LA to promote social welfare.....

Easterhouse – Bob Holman 1936 – 2016

Changing Lives Review Scotland 2006

Citizen Leadership



WSWD 2021

ITS POTENTIAL IMPACT ON THE
INTERNATIONAL SOCIAL WORK PROFESSION

New free e-book from IFSW to be published on WSWD
21.3.2023

“The Ubuntu Practitioner: Social Work Perspectives”





Sierra Leone

- 5th poorest country in the world
- 7 million people
- Farming and fishing sustain the villages
- Mines have been owned by other countries wealth has been exported
- Very little infrastructure is provided by the State
- Civil war 1991-2002
- Ebola, Malaria, HIV/AIDS, COVID19





Indigenous villages in the most poverty-stricken areas of one of the poorest countries in the world are working with social workers to co-design and co-produce community plans to transform lives



Being resourceful when there are no resources

A grandmother walked 10 km to collect a Veronica bucket, soap and first aid materials during the Covid outbreak for the children in her village

After Ebola and food poverty the community's resources are primarily themselves and their vision for the future of generations to come

HOPE is every where in Africa

Social work is beyond humanitarian aid.....

Hope Kindergarten

- Reuniting children with their families after civil war
- In the first year 383 children reunited with their families
- The families already experience poverty and food insecurity
- Realising that the power for change lies with the people is demonstrated in the early challenge, building or resurrecting village schools for primary education in an area where there is no NGO or government interest.



building local economies alongside working with the pain of trauma

The demography has changed.

- Many more female led households
- The young outnumber the old
- Polygamy often means 10 people sharing 10x10 foot room

Some of the issues

- Poverty
- FGM
- Gender based violence
- Teenage pregnancy
- Education

Some Solutions

- Women's peer support groups
- Replacing FGM with support for teenage girls
- Developing new income streams within the local economy





The women's group

Working with the women's groups, particularly the women who were the 'cutters' revealed that they supported the elimination of FGM but wanted to retain the supportive element of the traditions to prepare girls for adulthood.

They recognised the need to change their income source. They wanted to learn how to develop their businesses

They are planning peer led women's centres in each village, near the health centres, to support themselves and their children through the recovery from the trauma of violence, domestic abuse and rape

Poverty predominates
no infrastructure, no electricity, sanitation, fresh
water or roads.

This school has a classroom missing
washed away by the rains.

It was built by the community for the
community with no NGO or State
funding.

Half the teachers are paid for by the
community.

The girls are charging their cellphones
with a portable solar panel.

They want better solar power to study at
night, to power e-books and be more
connected with their global peers





Transport is by dugout canoe, motor bike or walking

Isolated villages are by-passed by governments and NGOs.

The strength and dignity of the people is the greatest asset in the co-design and co-production of their community plan for transformational change, led by the chiefs and key stakeholders in the community





Water pumps, schools and two health centres have already been built with no outside resources.

Inclusion

Working with all people in the community has been supported by the social workers.

They have been working to change discrimination and marginalisation. For example the assets of the disabled have been recognised and cherished.

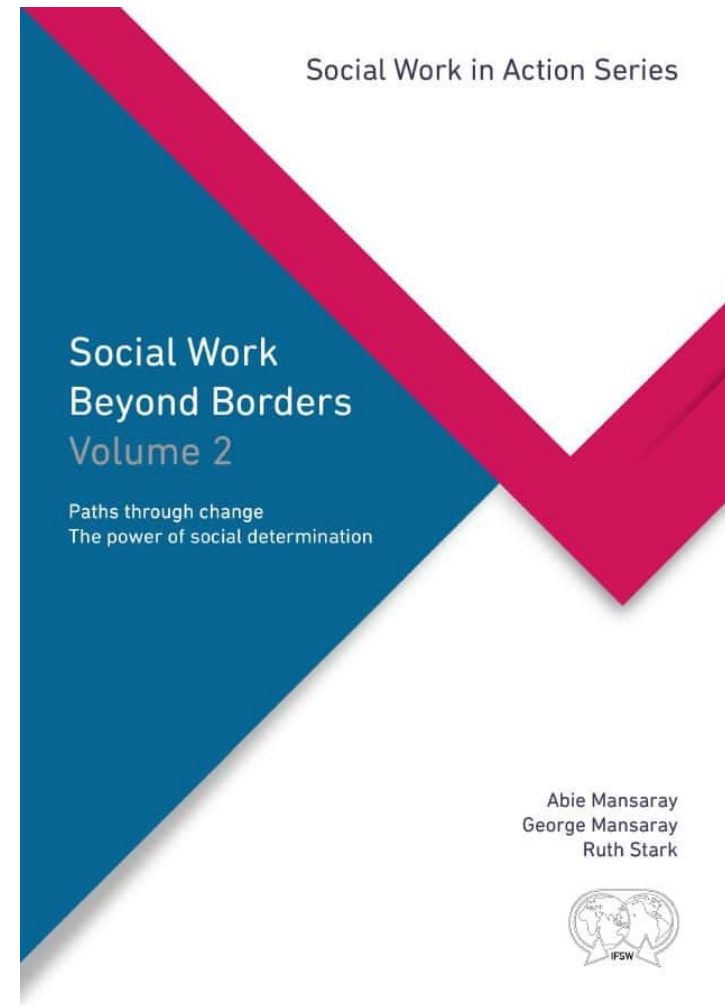
In one community they are the instigators and collators of the census of assets of each member of the community.

The speed and accuracy of fulfilling their task and laying the information before the community has been an essential element in the community co-design and co-coproduction of their community plan.



World Social Work Day 2020

Publication of
how the
Community co-
designed a plan
to co-build an
eco-social
resource centre



The community vision

To build a communal space for everyone, to go beyond our own natural space – an accessible eco-social centre for our shared futures.

Local and Global action - part of co-building our new eco-social world

It will provide a place to strengthen global learning and support reciprocity in our shared futures with people from across continents, not least of this is

- sustainable education,
- infrastructure,
- employment and recreation –

reinforcing our diverse communities ability to enhance well-being of every person in a protective and nurturing garden environment for work, rest and play



THE PEOPLE'S CHART
FOR AN ECO-SOCIAL WORLD

www.newecosocialworld.com

Instagram: @newecosocialworld Twitter: @ecosocialworld

Facebook: new eco-social world

Hashtag: #NewEcoSocialWorld



Co-building the Ubuntu Ecological Resource Centre a local/global application of Ubuntu

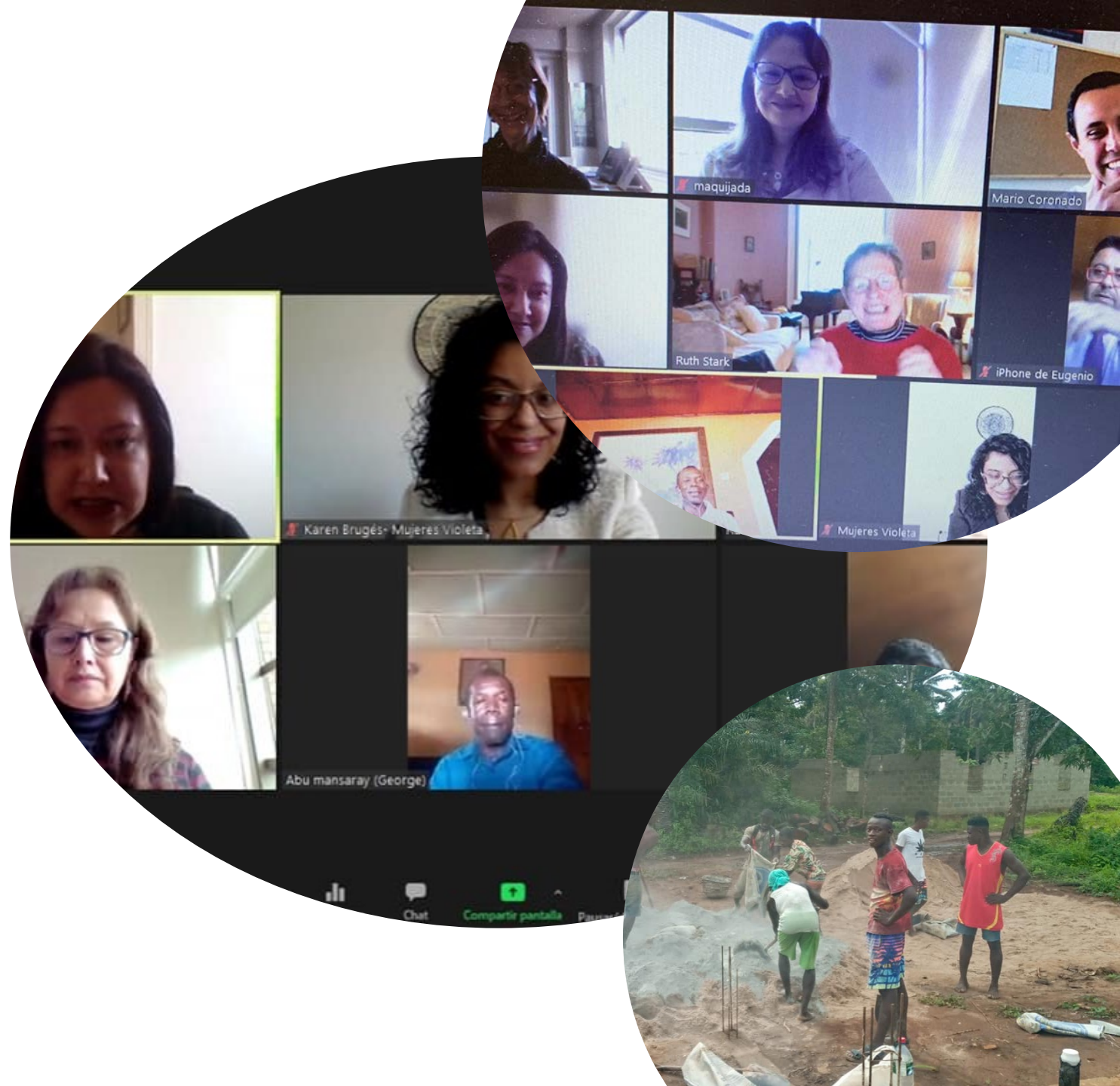
- Faith room
- high school
- school boarding block
- Health clinic
- back packers lodge
- recreation ground
- vegetable garden
- tree nursery
- tree planting space out of the centre
- swimming pool
- National & International student internships
- water supply unit
- solar light unit
- cultural hall
- jungle trail out of the centre
- and a multi-cultural kitchen
- bar and restaurant.

Finding co-builders locally and internationally

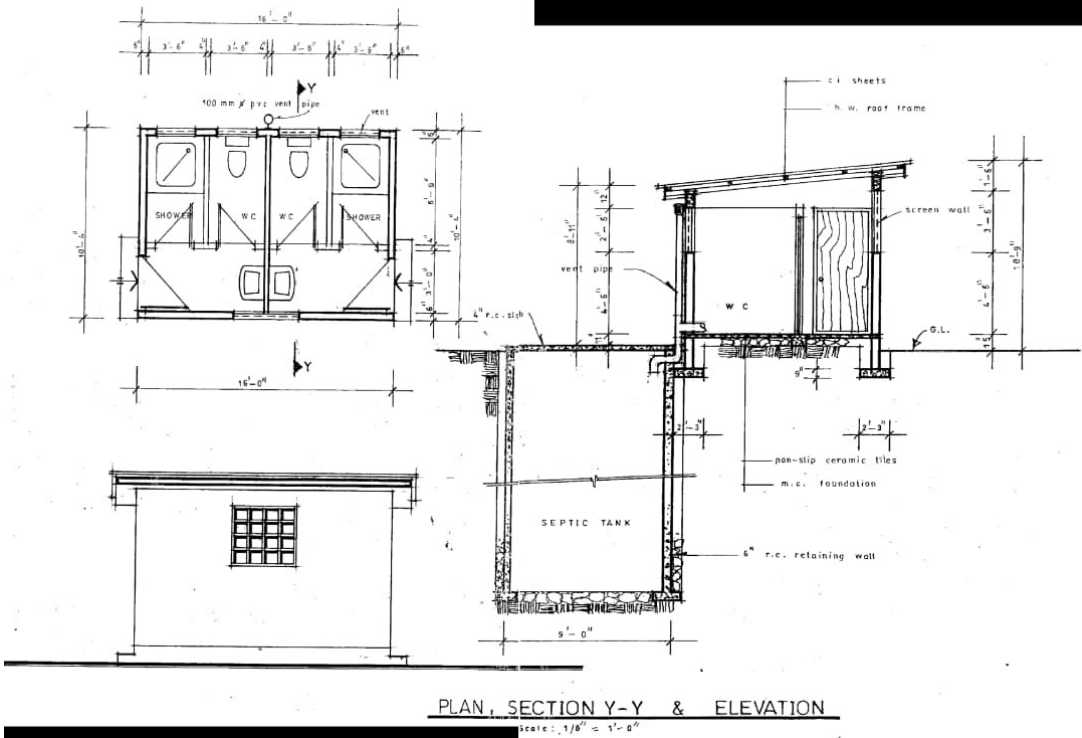
AvenirSocial Switzerland

Social Work LATAM Group

Han University Netherlands



Our septic tanks



Social Work and sustainable social development – fit for a new eco-social world



Ready for use!



Can we make the Paradigm shift to create new models of global practice?

IFSW publication due out on World Social Work Day 21, March 2023

The Ubuntu practitioner: Social work perspectives